

Harlesden Road, Willesden, NW10 3RE

Asking Price £395,000

Subject to Contract

Energy Efficiency Rating		Current	Potential
Very energy efficient - lower running costs			
(92 plus) A			
(81-91) B			
(69-80) C		78	80
(55-68) D			
(39-54) E			
(21-38) F			
(1-20) G			

Environmental Impact (CO ₂) Rating		Current	Potential
Very environmentally friendly - lower CO ₂ emissions			
(92 plus) A			
(81-91) B			
(69-80) C			
(55-68) D			
(39-54) E			
(21-38) F			
(1-20) G			

We have endeavoured to supply this information as accurate as possible. Before making an offer, buying or renting this property please seek independent or professional advice.

- Two double bedrooms
- Entryphone access
- Two bathrooms
- Gas central heating
- Most convenient of locations

- Off street parking
- Juliet balcony off sizable reception room
- Oak style kitchen with Granite style worktop
- Low voltage lighting
- No upper chain



Tel: +44 (0)2 8960 9988
Fax: +44 (0)2 8960 9989

Email: mail@warwickstateagency.co.uk
warwickstateagents.tv | warwickstateagents.co.uk

69 Chamberlayne Road, London NW10 3ND
Tel: +44 (0)20 8960 9988 Fax: +44 (0)20 8960 9989

Harlesden Road, NW10 3RE

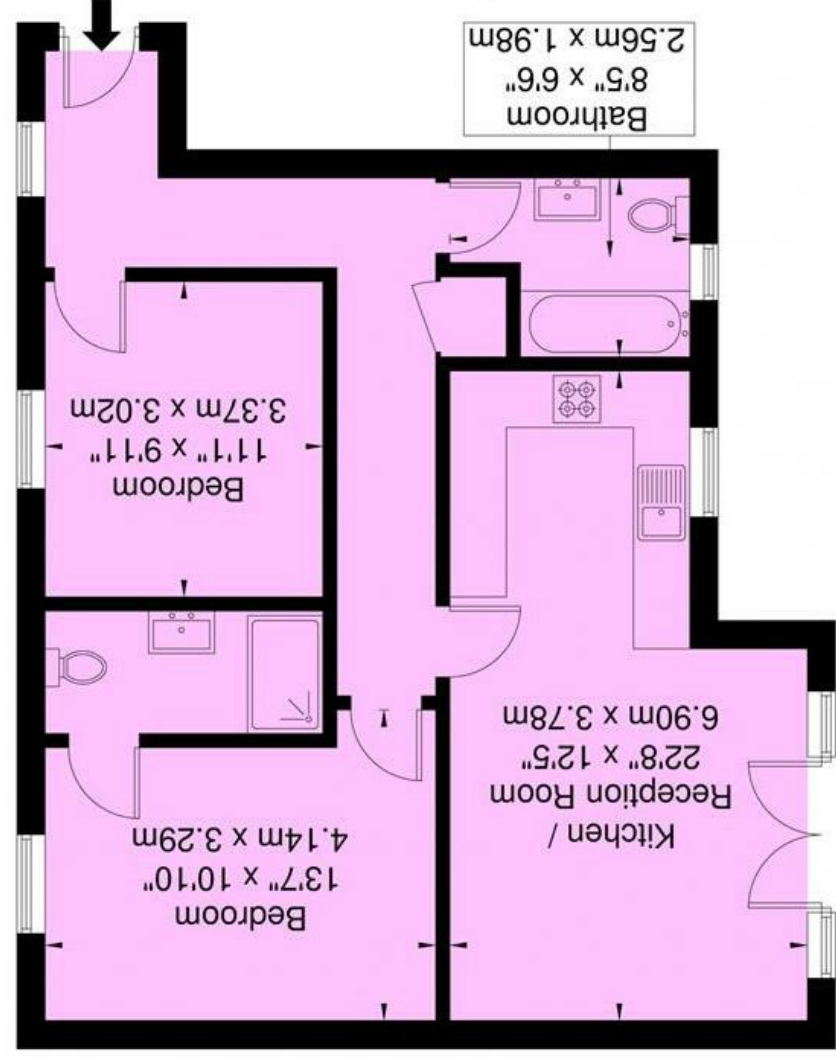
Well-proportioned two double bedroom apartment, on the third floor of this small modern private block, which was newly built approximately seven years ago, entered via entry-phone access, surrounded by communal lawns with patio walkways, and rear allocated parking, located within close proximity of local amenities.

The property offers over 730 sq ft of living accommodation, comprising of sizable L-shaped reception room with Juliet balcony, modern Oak style kitchen, with stainless steel fitted appliances, partly tiled family bathroom combined W.C, en suite shower combined secure off-street parking to the rear.

Close to a variety of local amenities including "Roundwood Park" parklands, in multitude of shopping facilities, in walking distance of over/underground train stations & alternative transport links.

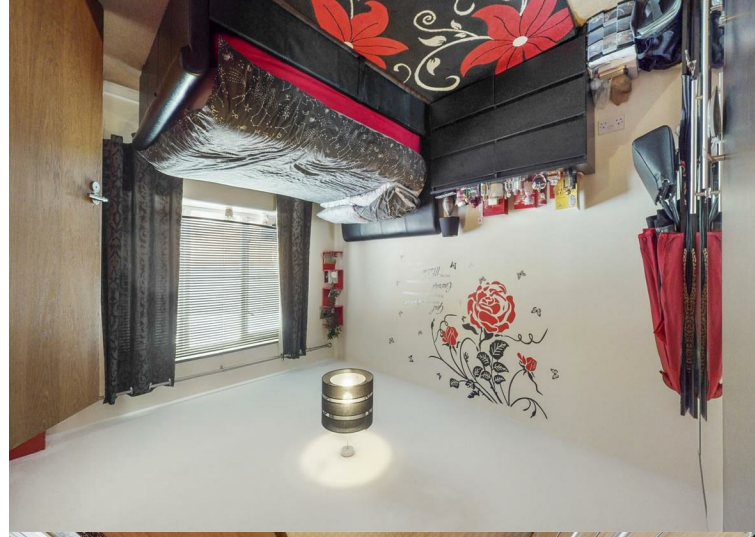
Bazalgette House, Harlesden Road, NW10 3RE

Approx. Gross Internal Area = 67.9 sq m / 730 sq ft



B L E U
 PLAN
 Copyright © BLEUPLAN
 Ref

The Floor plan is not to scale and measurements and areas shown are approximate and therefore should be used for illustrative purposes only. The plan has been prepared in accordance with the RICS code of Measuring Practice and whilst we have confidence in the information produced it must not be relied on. If there is any aspect of particular importance, you should carry out or commission your own inspection of the property.
 Copyright © BLEUPLAN



Tel: +44 (0)2 8960 9988
 Fax: +44 (0)2 8960 9989

Email: mail@warwickestateagency.co.uk
 warwickestateagents.tv | warwickestateagents.co.uk

69 Chamberlayne Road, London NW10 3ND
 Tel: +44 (0)20 8960 9988 Fax: +44 (0)20 8960 9989